



Notice of Race

UON SB20 World Championships Hamilton Island, Queensland, Australia.

Issued May 15 , 2012

December 12th – 20th , 2012

Hamilton Island Yacht Club Inc. (HIYC) and the SB20 Fleet Australia Inc. (SB20FA) invite eligible boats to attend and compete at the 2102 SB20 World Championships at Hamilton Island Queensland, Australia.

1. ORGANISING AUTHORITY (OA)

Hamilton Island Yacht Club Inc. in conjunction with the I SB20 Fleet Australia Inc., Buderim, Queensland, Australia and the SB20 Class Association World Council.

2 RULES

- 2.1 The regatta will be governed by the rules as defined in the Racing Rules of Sailing (RRS) 2009 – 2012 and the Class Rules of the SB20 Class.
- 2.2 The Class Rules of the SB20 Class shall be amended as follows:
Clause C4.1(1) is amended to insert...'inflatable PFDS are not permitted'.
Clause C5 is deleted entirely and replaced with safety requirements as attached in Appendix A 'Safety'
- 2.3 Crews will be weighed during registration for verification of compliance with Class Rule C3.1.(a)
- 2.4 In accordance of RRS 70.5, the decisions of the Jury shall be final.
- 2.5.1 If there is a conflict between languages the English text will take precedence.



HAMILTON ISLAND
GREAT BARRIER REEF AUSTRALIA



EventsQueensland
Regional Development Program



3. ADVERTISING

- 3.1 Boats shall be required to display advertising on their hull/spars/sails/rigging as nominated by the OA in accordance with ISAF Advertising Code. Any required advertising material will be distributed upon registration.
- 3.2 Boats may be required to display bow identification numbers.
- 3.3 Boats should present with the forward 1800mm of their hull, free from any logo or decals.
- 3.4 The team members of the boats placed 1, 2 and 3 at the end of each days racing shall be provided with 'Leaders Bibs' to wear. It is a requirement that these be worn. For the first day of the regatta these bibs shall be awarded the team who achieved the highest placing at the 2011 ZHIK SB20 World Championship.

4. ELIGIBILITY AND ENTRY

- 4.1 The Championship is open to registered boats of the SB20 Class which are in compliance with the Class Rules.
- 4.2 All competing crew members must be a valid current member of an SB20 Class Association or fleet affiliated with the SB20 World Council.
- 4.3 All Australian Crew Members shall hold a current Yachting Australia Silver Card.
- 4.4 Registration will take place In the Hamilton Island Yacht Club Registration Office on the dates stated in this Notice of Race. The following documents will be required:
 - a) Proof of current and valid insurance. All competing yachts must hold current and valid insurance with a Public Liability component of at least \$10 million AUD.
- 4.5 Entries may be made on the prescribed form and sending it together, with the entry fee to the address nominated therein. Entries will open July 1, 2012 and must be received by 1700 hours December 1st, 2012. There will be no late entries.
- 4.6 Entries will not be confirmed until full payment is received and the relevant National Association or World Council has confirmed paid membership.
- 4.7 No classification requirements will apply under ISAF Regulation 22, Sailor classification code.





5. FEES

5.1 The Entry Fee shall be \$800.00 AUD per boat for 3 person teams and \$850.00 AUD per boat for 4 person teams.

- entry fee includes the following :
- Berthing for your SB20 for the event
- Hardstand storage for your SB20/container pre and post the event
- Forklift and crane use at the event
- Event Gift Pack

5.2 The SB20 Class levy is not included in the fees and will be collected upon registration by the SB20 class.

5.3 Cancellation of entry fees once made will not be permitted, however until the close of entries it is permitted that an entry fee paid may be transferred to another party.

6. SCHEDULE

6.1 Race Schedule

EVENT	RACE	DATE	WARNING SIGNAL
Registration at Hamilton Island Yacht Club		Wednesday 12 th December	0900 hrs – 1700 hrs
		Thursday 13 th December	
Race Day 1	Up to 3 races	Friday 14 th December	1000 hrs
Race Day 2	Up to 3 races	Saturday 15 th December	1000 hrs
Race Day 3	Up to 3 races	Sunday 16 th December	1000 hrs
Lay day	Resails if required	Monday 17 th December	tba
Race Day 4	Up to 3 races	Tuesday 18 th December	1000 hrs
Race Day 5	Up to 3 races	Wednesday 19 th December	1000 hrs
Race Day 6	Up to 3 races	Thursday 20 th December	1000 hrs



HAMILTON ISLAND
GREAT BARRIER REEF AUSTRALIA



EventsQueensland
Regional Development Program



- 6.2 The time for the last warning signal on any day shall be 1600 hours.
6.3 Social Schedule

EVENT	DATE	TIME
Welcome Function	Wednesday 12 th December	1900 hrs
Pool Party	Sunday 16 th December	1830 hrs
Presentation of Prizes	Thursday 20 th December	1930

- 6.4 A daily presentation and happy hour will be held each race day as soon as possible after boats return to the marina.

7 CHAMPIONSHIP

- 7.1 The Championship may consist on a Qualifying Series and a Final Series if the OA so decides depending on the number of entries. Otherwise all boats will race a Fleet Series. The sailing Instructions will describe the format. There shall be a maximum of 12 races.

8 MEASUREMENT

- 8.1 Each boat shall be available for weighing and inspection of equipment as per Class Rule C6. A schedule for this compliance check will be posted on 10th December, 2012.
- 8.2 Random audits of a boat, its equipment and compliance with paragraph 2 of this Notice of Race shall be conducted at any time during the regatta.
Boats to be audited shall be identified by the Class Measurer at any time during registration or at the end of a day's racing and such boats shall be directed to a compliance dock.
- 8.3 Crew members shall present during registration for weighing for compliance with Class Rule C3. All crew members from a boat must present at the same time.

9 SAILING INSTRUCTIONS

- 9.1 Sailing Instructions shall be available online from the event website from December 10th, 2012. A hard copy of the SI's will be issued to a competing yacht at registration.



HAMILTON ISLAND
GREAT BARRIER REEF AUSTRALIA



EventsQueensland
Regional Development Program



10 VENUE

10.1 The venue for racing shall be the waters adjacent to Hamilton Island. Appendix B 'Course Areas' identifies the approximate course areas.

11. COURSES

11.1 The courses to be sailed will be windward/leeward as detailed in the Sailing Instructions.

12. PENALTIES

12.1 RRS 44.1, 2 is amended in that only one turn, including one tack and one gybe, is required except for infringements that occur within three boat lengths of a rounding mark.

13 SCORING

13.1 The Championship will be scored as provided in RRS Appendix A using the Low Point System. A total of 3 races are required to constitute a Championship.

13.2 If a Single Fleet series is conducted a boat's score shall be the sum of her race scores except that if 8 or more races are concluded, she may exclude her worst score. There shall be a maximum of 12 races.

13.3 If a Qualifying/Finals series is conducted then:

13.3.1 Qualifying races – The Qualifying series shall be a maximum of 6 races. A boat's score shall be sum of her race scores except that if 6 races are concluded, she may exclude her worst score.

13.3.2 Finals races – The Finals series shall be a maximum of 6 races. A boats score shall be sum of her race scores except that if 6 races are concluded, she may exclude her worst score.

13.3.3 A boats final total score for the championship will be the sum of her qualifying score plus her finals score.

13.3.4 In the event that the championship is completed before a final series is conducted, the winning boat shall be the boat whose scores within the qualifying series is lowest between the two qualifying fleets. In the event that two or more boats achieve the same score, the tie shall be broken in accordance with RRS Appendix A.



HAMILTON ISLAND
GREAT BARRIER REEF AUSTRALIA



EventsQueensland
Regional Development Program



14. SUPPORT BOATS

- 14.1 Private Support/Coach. Teams wishing to use Support/Coach boats must complete the Support/Coach boat registration on the Event entry form. A registration fee of \$300.00 AUD per boat will be required. Boats will be issued with an event registration number, event flag and berthing details. One ticket to each of the Opening and Pool party functions shall be included in the registration fee (additional tickets may be purchased). Boats must display the sail number and country flag of the SB20s they represent.
- 14.2 Only Official boats (identified by the OA flag) are permitted within the race zone (defined in the SI's) from the warning signal of the first race of any day until the end of that day's racing. Private Coach or support boats are excluded from zone during this time. They may attend the course and remain within an area downwind of the start line, and no closer than 100 metres from the start line - at all times whilst the races are in progress and between any races on that day. At the end of racing for the day (as signalled by the RC boat), they may approach the fleet/boats.
- 14.3 Team Support and Coach Boats should at all times conduct a listening watch on VHF channel 77. The RC will utilise this channel for communications. In the event of an emergency Support/Coach boats may be directed to provide assistance.

15. SPECTATOR BOATS

- 15.1 Official spectator and media boats will be identified and will be allowed to transit the zone. Private spectator boats must remain outside the zone at all times as per paragraph 14. SUPPORT Boats.
- 15.2 Spectator boats should at all times conduct a listening watch on VHF channel 77. The RC will utilise this channel for communications. In the event of an emergency Support/Coach boats may be directed to provide assistance.

16. BERTHING

- 16.1 Boats will be allocated berthing in floating marina berths. Berths will be shared by multiple boats. Boats shall use their assigned berths during the regatta. Berthing for SB20s will be provided as part of your entry fee.





17. HAUL OUTS

- 17.1 All Boats must be in the water by 1700 hours on December 13, 2012 and remain in the water until after the last scheduled race is completed. Boats may not be hauled out during this period without the express written permission of the Jury.
- 17.2 The use of dive equipment to maintain the boats cleanliness is permitted. The use of commercial divers is permitted. The use of towel slings or such to clean the hull is permitted. Raising the keel and hauling the boat on to its side whilst still in the water, is permitted.

18. RADIO COMMUNICATION

- 18.1 Whilst racing - Except in emergency boats shall neither make nor receive radio communications not publicly available to all boats. This also applies to communications by mobile phone. The RC will broadcast information to all competitors on the designated VHF channel 77 and may also use the SMS service on mobile phones.

19. PRIZES

- 19.1 The World Champion team shall receive the SB20 World Championship Perpetual Trophy
- 19.2 The World Champion team and all teams to 10% of the overall entries place overall shall receive keeper trophies for all crew members.
- 19.3 Other trophies shall be at the discretion of the OA.

20. DISCLAIMER OF LIABILITY

- 20.1 Competitors participate in the regatta entirely at their own risk. See RRS 4 Decision t race. The OA will not accept any liability for material or personal injury or death sustained in conjunction with or prior to, during, or after the regatta.

21. MEDIA RIGHTS

- 21.1 The Media Rights belong exclusively to OA. By participating in this event a competitor automatically grants to the OA and its sponsors, the right in perpetuity to make, use and show from time to time at their discretion, any motion pictures and live, taped or filmed television and other reproductions of him or her during the period of the competition without compensation. The participants also undertake not to allow any act of reproduction, public communication or any distribution of images of the race, without the previous authorisation from the OA.





APPENDIX "A"

SAFETY

The following Safety equipment shall be carried at all times

3. 2 paddles
4. 1 first aid kit
5. A dedicated floating tow line of minimum diameter 8mm and minimum length 30m.
Aramid fibre lines may not be used.
6. VHF radio
7. Floating torch with batteries.
8. Sharp knife located in cockpit
9. Basic Tools



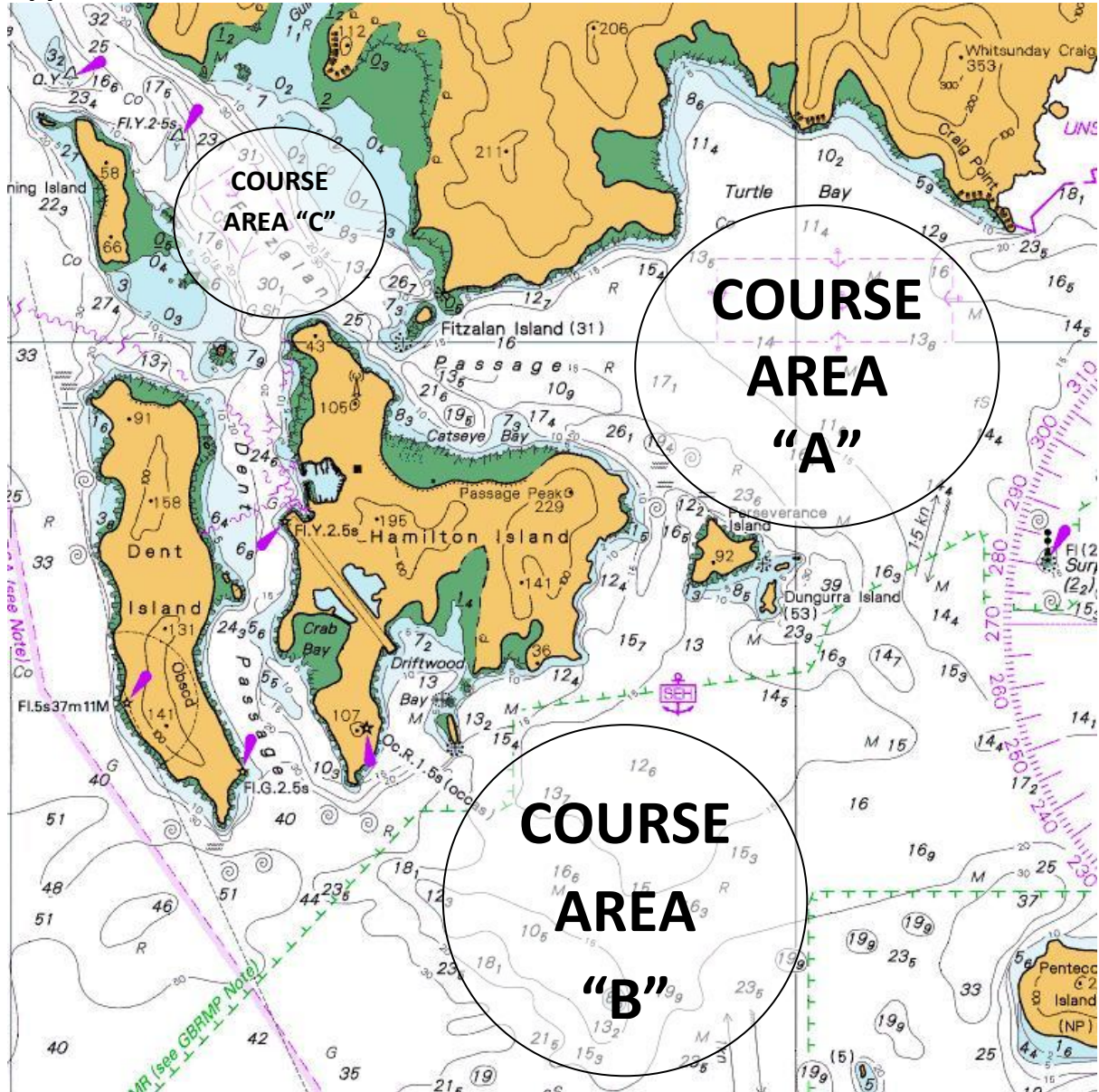
HAMILTON ISLAND
GREAT BARRIER REEF AUSTRALIA



EventsQueensland
Regional Development Program



Appendix "B" Course Areas



HAMILTON ISLAND
GREAT BARRIER REEF AUSTRALIA



EventsQueensland
Regional Development Program